

LIVE FIRE CONVOY COURSE (LFCC) SOP

RANGE DESCRIPTION

The LIVE FIRE CONVOY COURSE (LFCC) is an active, small arms, live-fire range located at Grid 79207115. It is accessible from MCB-3 and MCB-6.

Primary Uses: Standard, multipurpose small arms direct fire.

Alternate uses: Fire and MOVEMENT.

LIVE FIRE CONVOY COURSE



RANGE INFORMATION:

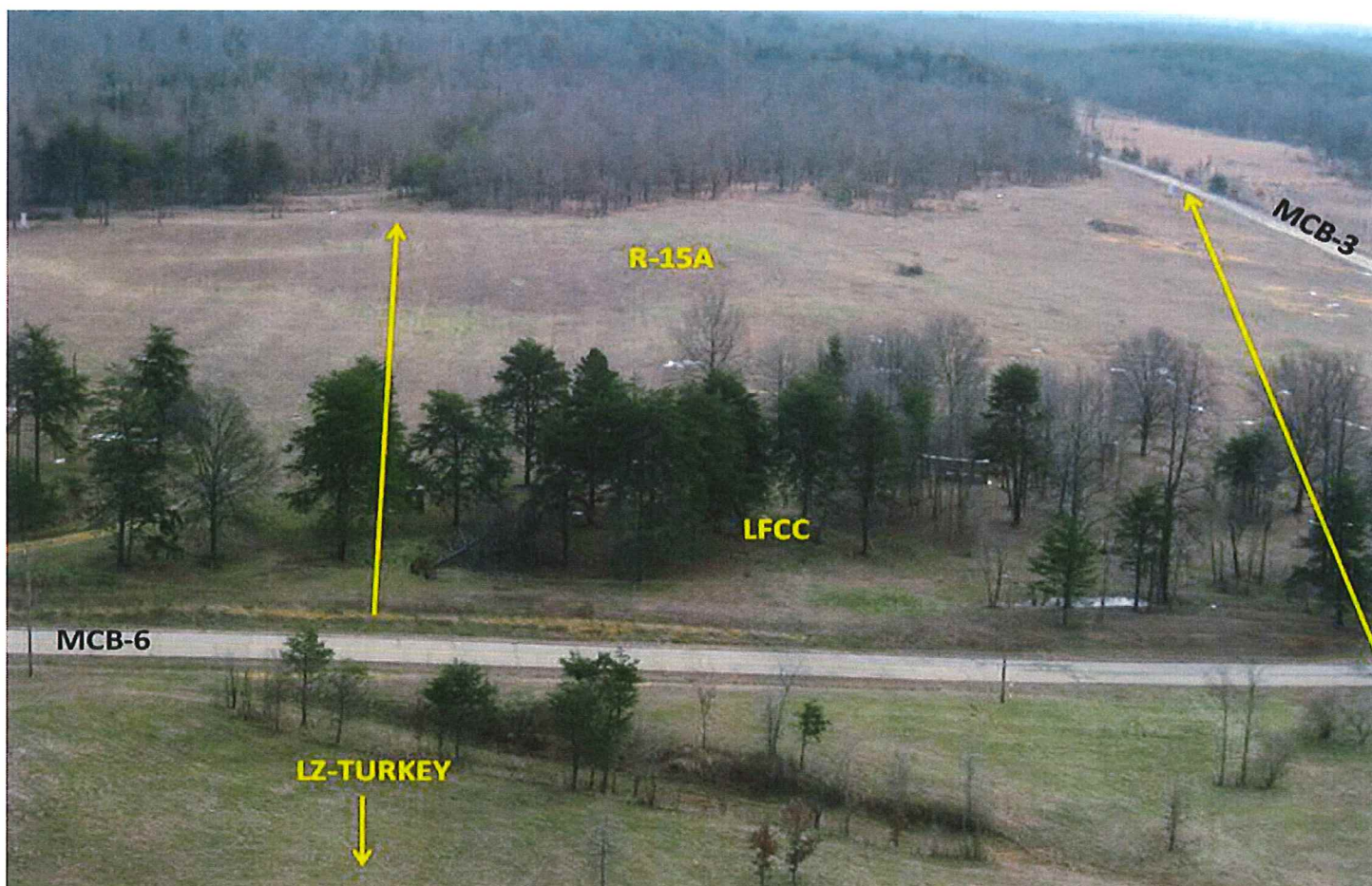
TARGETS: User provides own targets, or targets available through THE Training Support Section (TSS) at (703)784-4492. Also see #3 below.

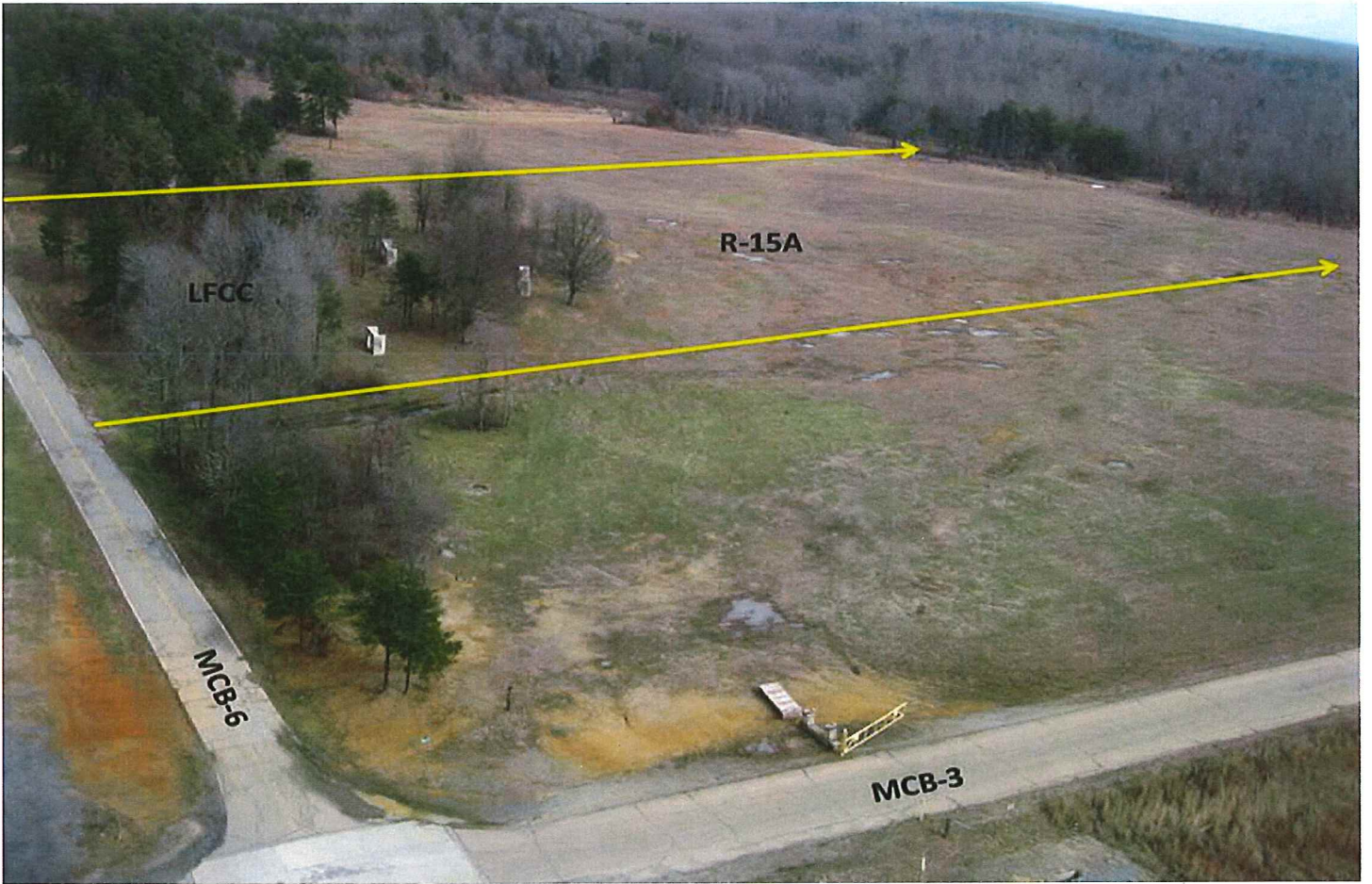
WEAPONS ACCOMMODATED

- M16A2/A4
- Pistol
- Shotgun
- Light and Medium Machine Guns
- Grenades (Illum/Practice)
- M203

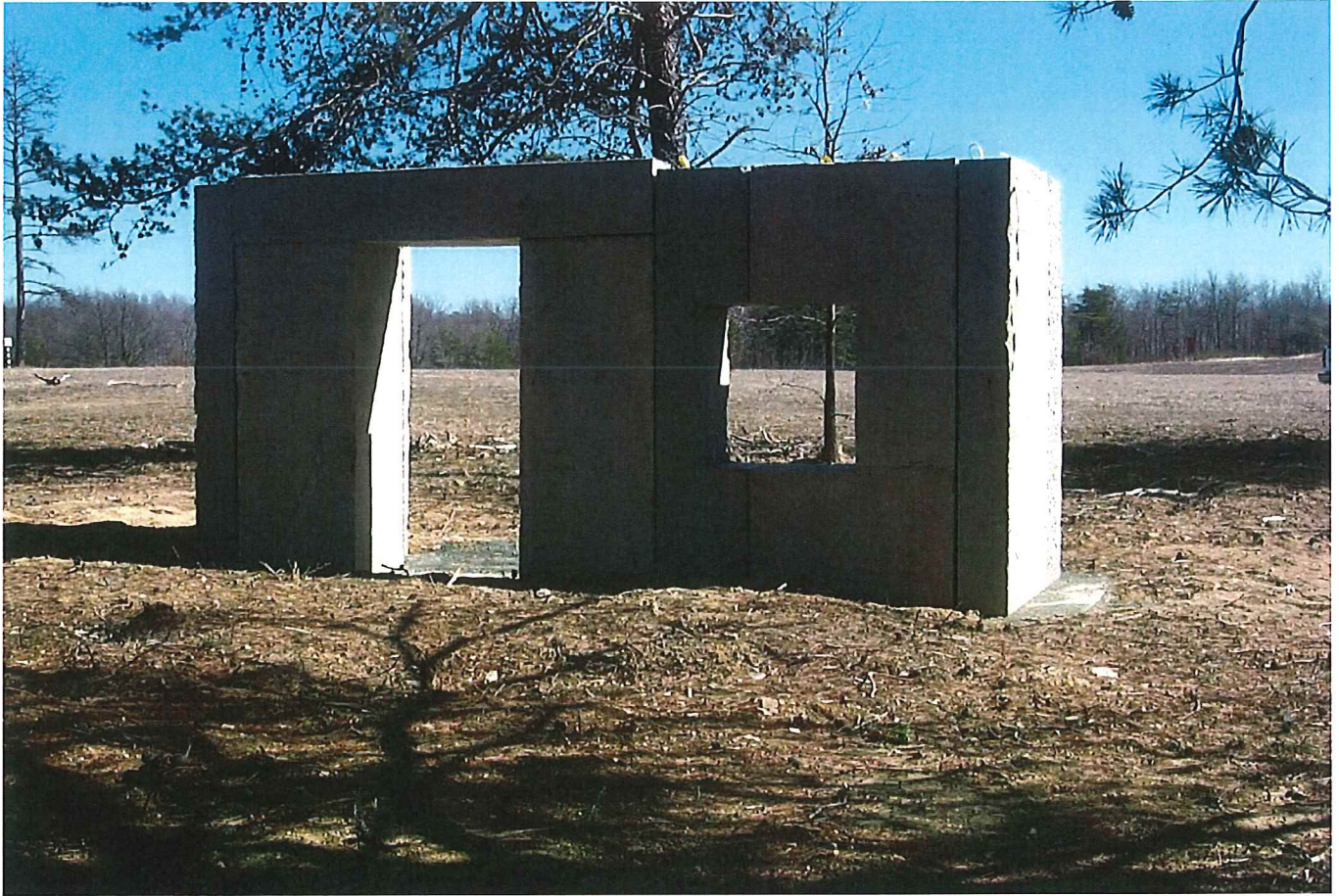
AMMUNITION AUTHORIZED

- M203 Illum/Practice/TP
- Grenade Illum/Practice
- Shotgun
- 5.56mm (All)
- 7.62mm (Ball)
- Pistol (All)









ADDITIONAL RANGE INFORMATION:

PRIMARY DIRECTION OF FIRE. Southeast

SPECIAL INSTRUCTIONS/COMMENTS

1. The only weapons and ammunition authorized on this range are the ones contained in this SOP.
2. All targets must be placed so that when fired at, no rounds will escape the lateral limit markers. All left and right lateral limit markers are black and white striped. Left side markers have stripes running top to bottom, left to right. Right side markers have stripes running top to bottom, right to left.
3. For the LFCC, the left and right lateral limits are the outside edges of the far left and right SACON walls.
4. PITS targets will be placed in the openings on the target support platforms. Targets will not be placed in front of the SACON structures.
5. Units can incorporate the LFCC and Range 15A into one event.
**Note: MCB-3 and MCB-6 must be closed when LFCC is hot.
6. Targets may be engaged from the road.
7. Vehicle-mounted guns must cease fire once individuals dismount and start the assault.
8. Targets may not be engaged from across the road (MCB-6).
9. Units that do not occupy their range within two hours of their scheduled occupy time will lose the use of that range for that day.
10. Units that have requested contractor support (i.e., automated targets, PITS targets, battlefield effects simulators, etc.) that are not present on the specified range within 1 hour of the requested time and have not contacted RMB/TSCQ will forfeit all contracted support for the day.
11. Units that have occupied a range with approved contractor support (i.e., automated targets, PITS targets, battlefield effects simulators, etc.) and that have not begun to use that support within 2 hours of the requested hour of operation will forfeit all contracted support for the day.
12. Units that are training with contractor support (i.e., automated targets, PITS targets, battlefield effects simulators, etc.) that place themselves voluntary into check fire for 2 hours during the approved support operational hours will forfeit all support for the day.

NOTE: Units that encounter situations where contractor support (i.e., automated targets, PITS targets, battlefield effects simulators, etc.) is delayed or interrupted by circumstances beyond the control of the requesting unit (i.e., RMB directed check fire, ASP support, MEDEVAC, etc.) must contact RMB/TSCQ in order to arrange continued support within the scope of the contract and available assets.

13. Range 15A cannot be occupied while Ranges 11, 8A, 9A or MAC Facility are "hot."

14. Range 15A cannot be occupied while Range 8 is firing 25 mm TP-T.

15. Range 15A cannot be occupied while Range 8A is firing AT-4 84mm HEAT.

16. There is no downrange movement on Range 15A or LFCC when Ranges 8 and 8A are hot. This pertains primarily to BOC and IOC.

17. Placement of PITS targets is authorized behind the SACON structures.

APPLICABLE MAP SHEET. All grid coordinates listed in this order apply to the Quantico Military Installation Map V834S Edition 4-NGA 1:25000.

FACILITIES

Towers: 0

Bleachers: 0

Sheds: 0

Ammo Breakdown table: 0

Parking: Very limited.

UTILITIES AVAILABLE

Electricity: None

Lights: None

Water System: None

INSTALLED COMMUNICATIONS. None

Nearest MEDEVAC Landing

MILES

Zones (LZ)

1/4

86706410 (LZ Turkey)

Directions: Exit Range 15A to the rear, cross over MCB-6, go straight to the open area to the northwest approximately 300 meters.

LASERS AUTHORIZED. Class 1 - 3R. Standard aiming devices mounted on approved service rifles. Class 3B can be fired if safety filter is on, reducing power output.

COMMUNICATION REQUIREMENTS:

1. A radio check is required immediately upon occupying any portion of the RTA, every 30 minutes in a live fire status and every 3 hours in a non-live fire status.
2. The Range Control Facility (RCF) Fire Desk Net Control call sign is "Range Control". Your call sign is "Range XX" (name of range, training area or facility unit is occupying).
3. The primary RCF Fire Desk Net Control frequencies are: ELMR talk group "RC Safety" (ground) and 323.7 AM UHF (air).
4. The secondary RCF Fire Desk Net Control is telephone, numbers: 703-784-5321 or 5322.
5. OIC/RSO will monitor the RCF primary and secondary Safety Nets at all times. Instant communication is required.
6. Any unit with organic ELMR radios will have their ELMR radios programmed with the "RC Safety" talk group and use those radios as their primary means of communication within the RTA.
7. Units without organic ELMR assets will be issued ELMR radios from RMB upon check-in.
8. Approved Non-ELMR radios are only authorized for internal communication (ground).
9. If the RCF cannot reach a unit within the RTA via primary communication, the unit will be contacted via the secondary means of communication.
10. Upon loss of primary communication the OIC/RSO will initiate a "check fire"/cease training status and will contact the RCF via secondary communication. This communication will be maintained while primary communication is being restored. Units may only resume firing/training once primary communication has been re-established and clearance is granted by the RCF.

INJURY CLASSIFICATIONS:

Injuries are classified into the following categories in order to aid in casualty evacuation from the RTA.

1. ROUTINE. Routine injuries are those injuries that are not threatening to life, limb or eyesight; and conditions or illnesses treatable by medication or procedures available at the base medical facilities.

2. PRIORITY. Priority injuries are those injuries that require immediate medical attention but are not threatening to life, limb, or eyesight if treated promptly.


3. URGENT. Urgent injuries are severe injuries that are threatening to life, limb, or eyesight and require immediate medical attention.

4. MASS CASUALTY. A mass casualty is a series of injuries with multiple priority and urgent medical patients.

MEDICAL EVACUATION (MEDEVAC) PROCEDURES:

1. Injury occurs.
2. Range immediately cease-fires.
3. Medical support evaluates/treats injured personnel.
4. Range OIC/RSO notifies the RCF of the injury, is the victim conscious/unconscious and what type of MEDEVAC transportation is requested (ground/air).
5. The OIC/RSO must maintain constant radio contact with Range Control and awaits further instructions.

*Minor injuries and illnesses not requiring medical services need not be reported to the RCF but should be reported in unit training logs.



A handwritten signature in blue ink, appearing to read 'J. Wood', is written over a horizontal line.

Range Control Officer

Date: 7 June 2016